

# Red Global de Cuentas Nacionales de Transferencias (NTA)

Iván Mejía Guevara



[imejia@stanford.edu](mailto:imejia@stanford.edu)

Taller NTA

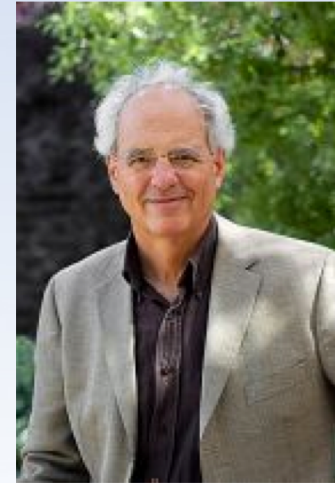
San Salvador, Septiembre 18, 2018



# Líderes Fundadores

- Dr. Ronald Lee

Berkeley  
Demography



- Dr. Andrew Mason



 EAST-WEST CENTER



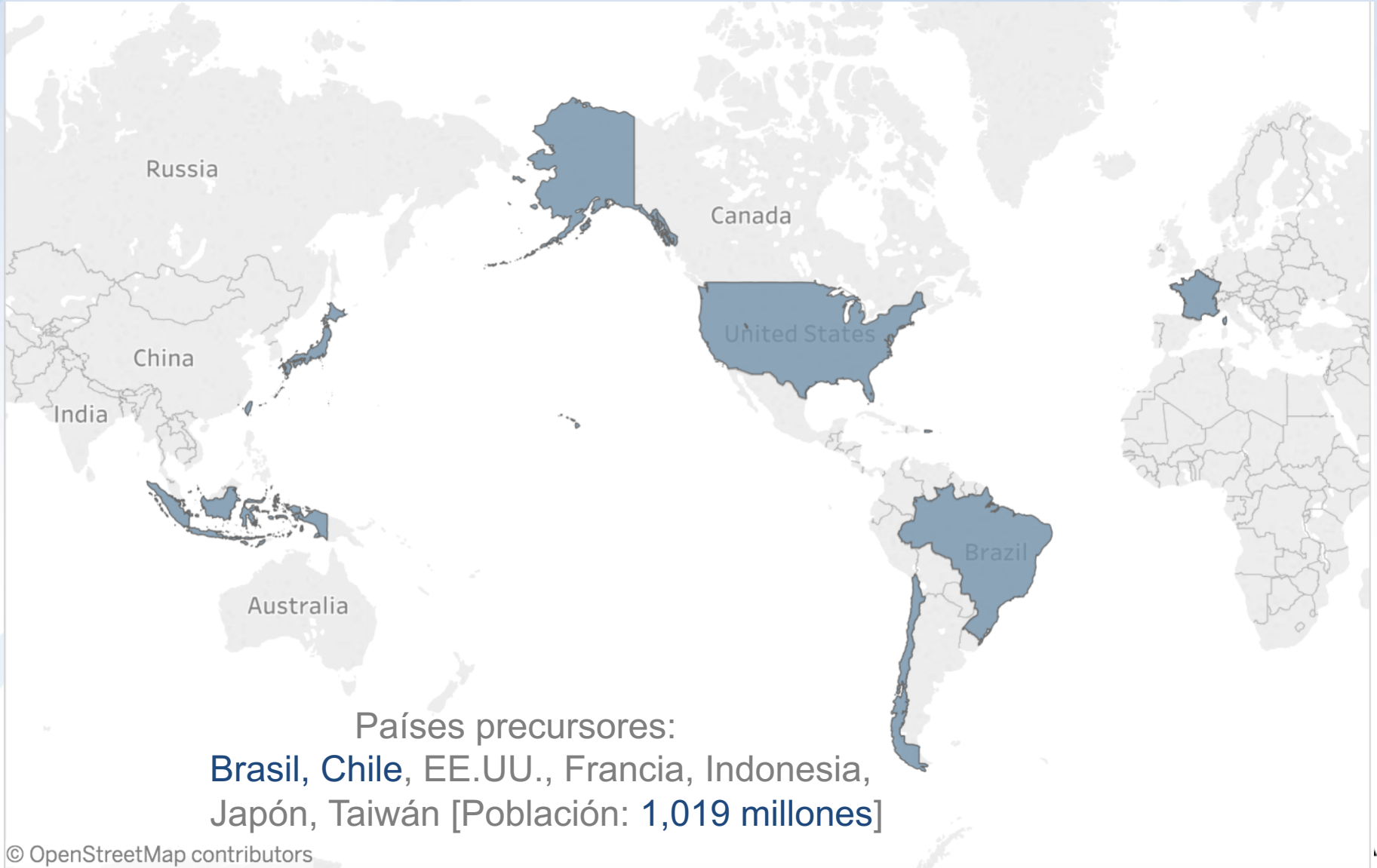
# Economía Generacional

- Implicaciones económicas del cambio en la estructura por edad de la población
- Brindar recomendaciones en el diseño de política pública para aprovechar las oportunidades y enfrentar de mejor manera los retos del cambio demográfico

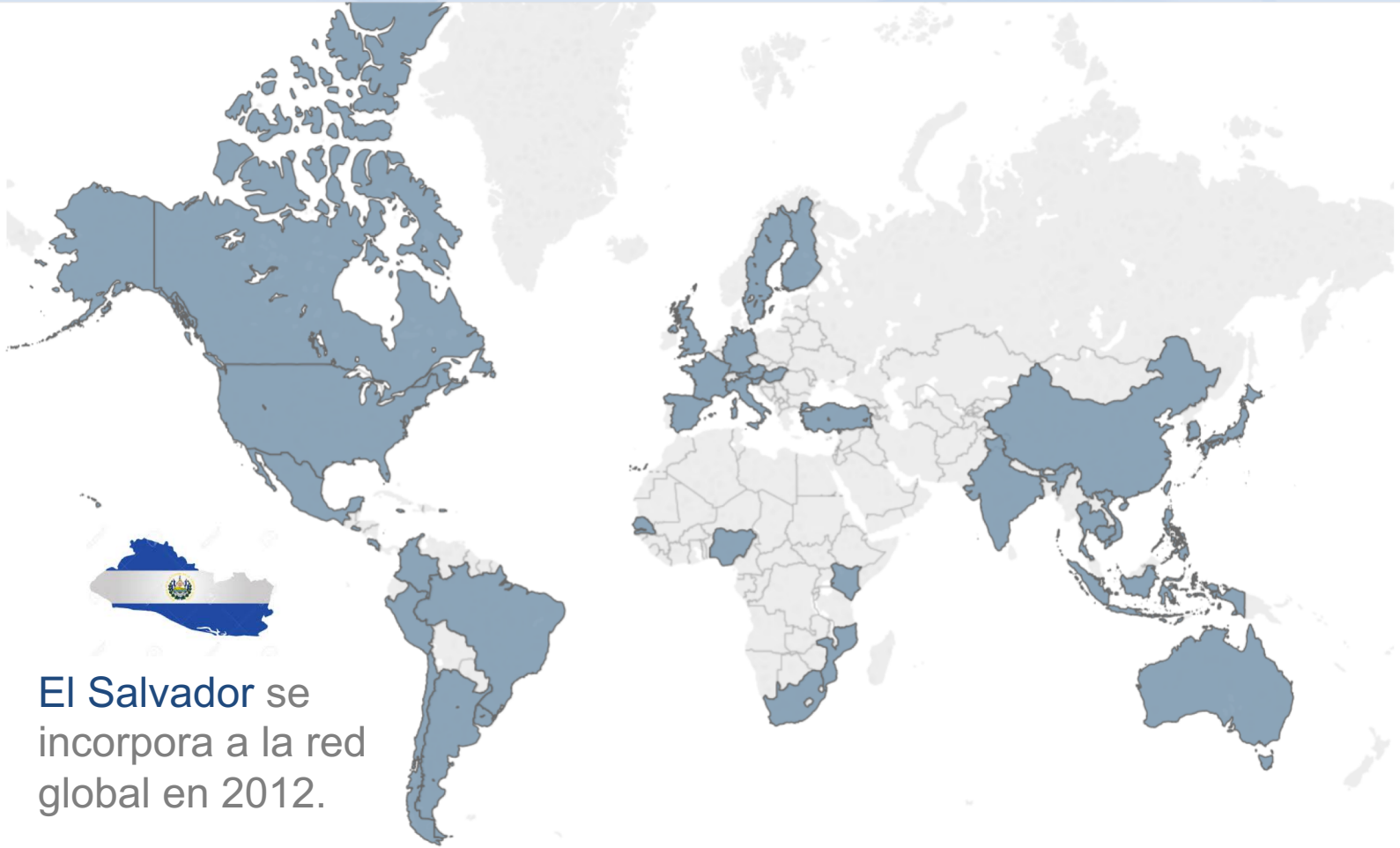
# Objetivos

- Mejorar nuestro entendimiento de la economía generacional
- Entender la influencia del crecimiento poblacional y el cambio en la estructura etaria sobre:
  - el crecimiento económico,
  - género,
  - equidad generacional,
  - finanzas públicas,
  - sistemas de pensiones.

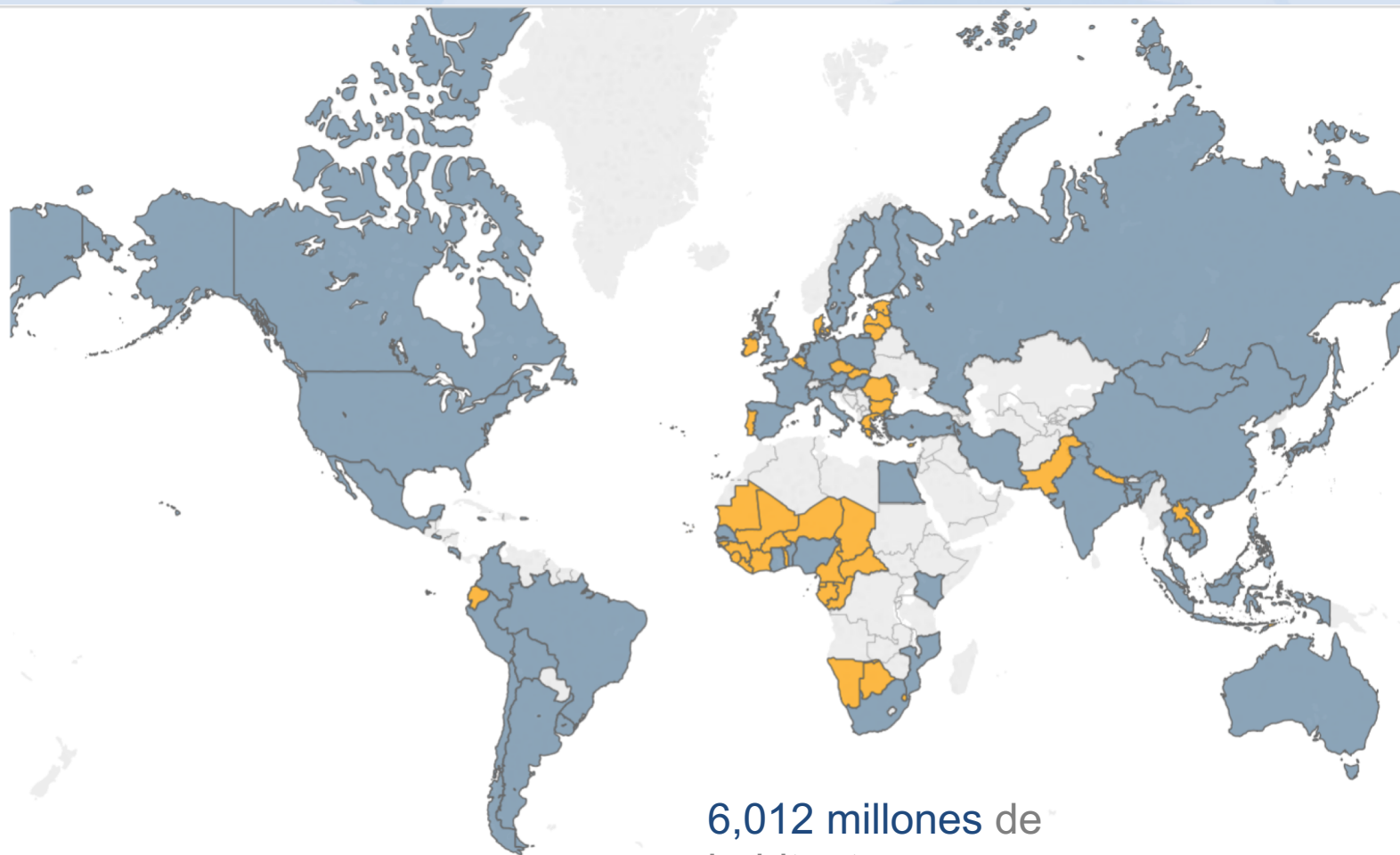
# 2003 (7 countries)



# 2012 (39 países)



# 2018 (94 countries)



# Metodología

- Distribución de flujos económicos nacionales entre los diferentes grupos de edad
- Se emplean fuentes de información diversas (proyecciones de población, encuestas de ingreso y gasto, registros contables)
- Consistente con el Sistema de Cuentas Nacionales (UN SNA)
- Estándar aplicada a todos los países miembros de la red



# Metodología

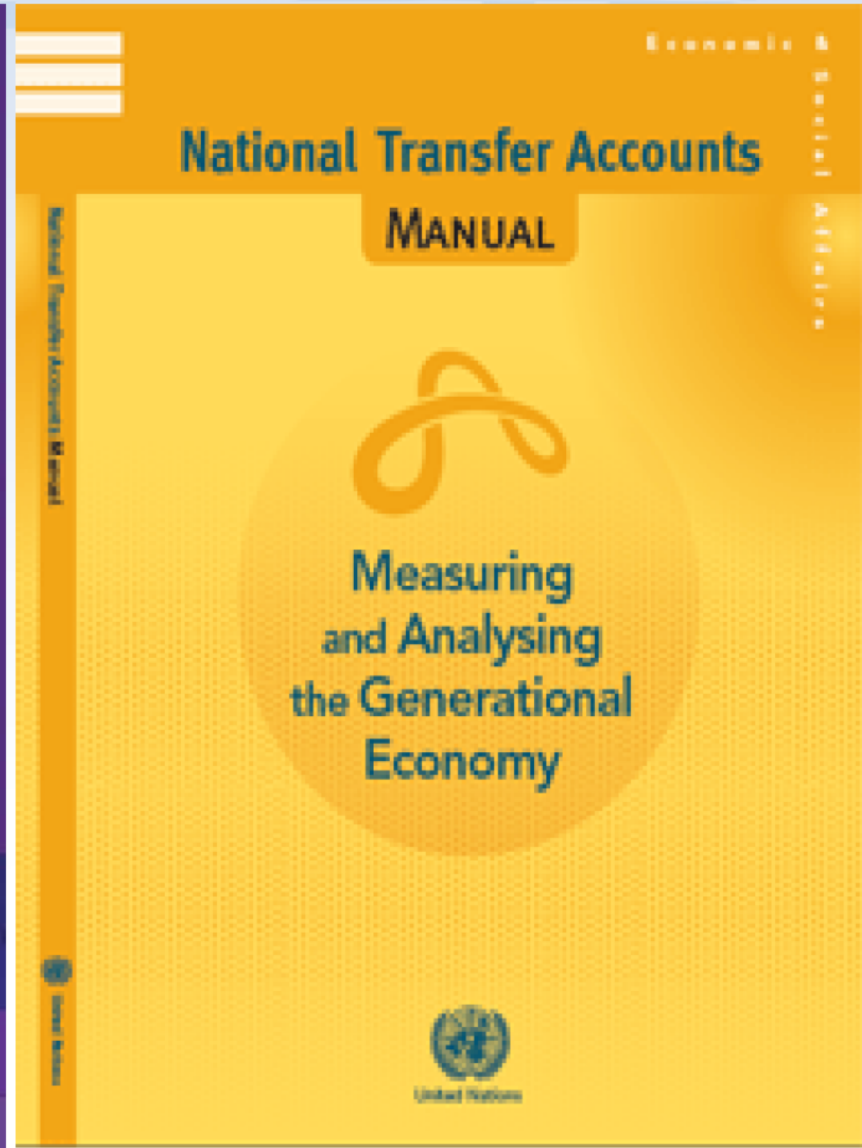
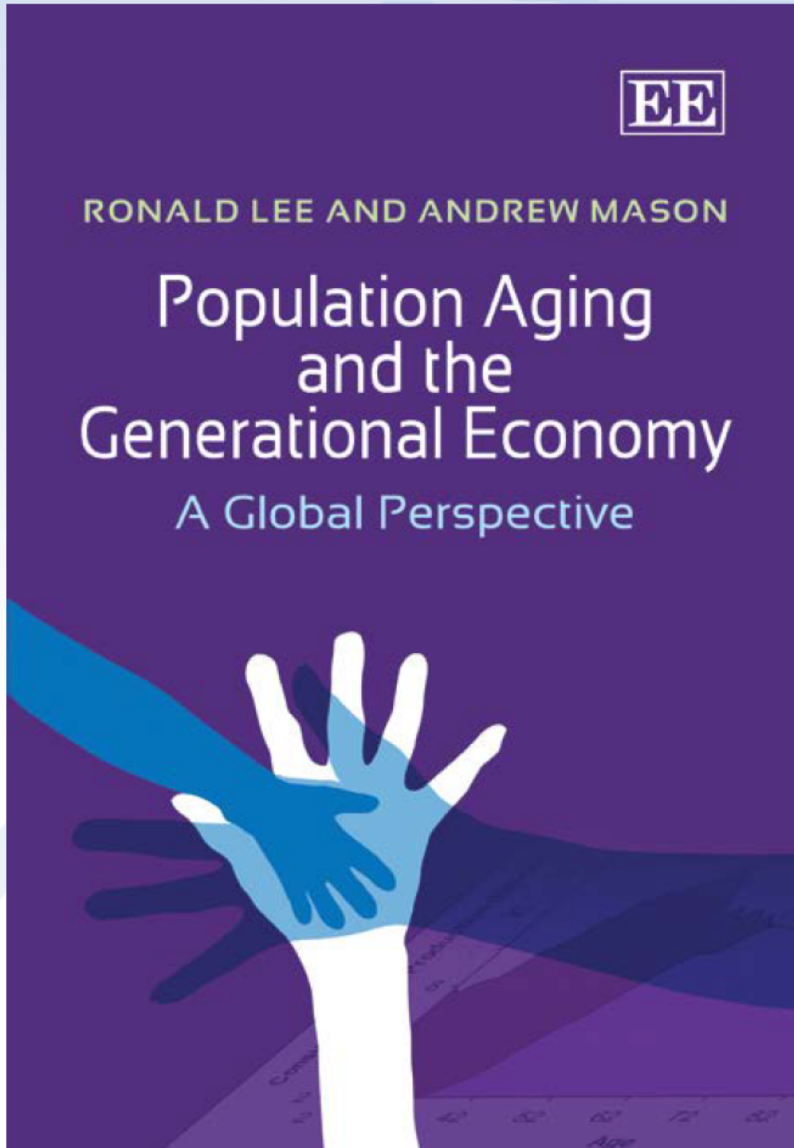
EE

RONALD LEE AND ANDREW MASON

## Population Aging and the Generational Economy A Global Perspective



# Metodología



# Nueva Organización

- Reglamento interno (Junio 15, 2018)
- Miembros fundadores: Dr. Lee, Dr. Mason
- Consejo Ejecutivo: Dr. Sang-Hyop Lee (presidente) 2018-2020
- Coordinadores regionales
  - África
  - Asia y Pacífico
  - Europa
  - Latinoamérica: Dr. Paulo Saad (Chile) & Dra. Piedad Urdinola (Colombia)

# Aportes

- Mejoramiento en la producción y calidad de la información
- Investigación
- Recomendaciones de política
- Comparativos internacionales y por país específico
- Reuniones globales y regionales
- Talleres de capacitación

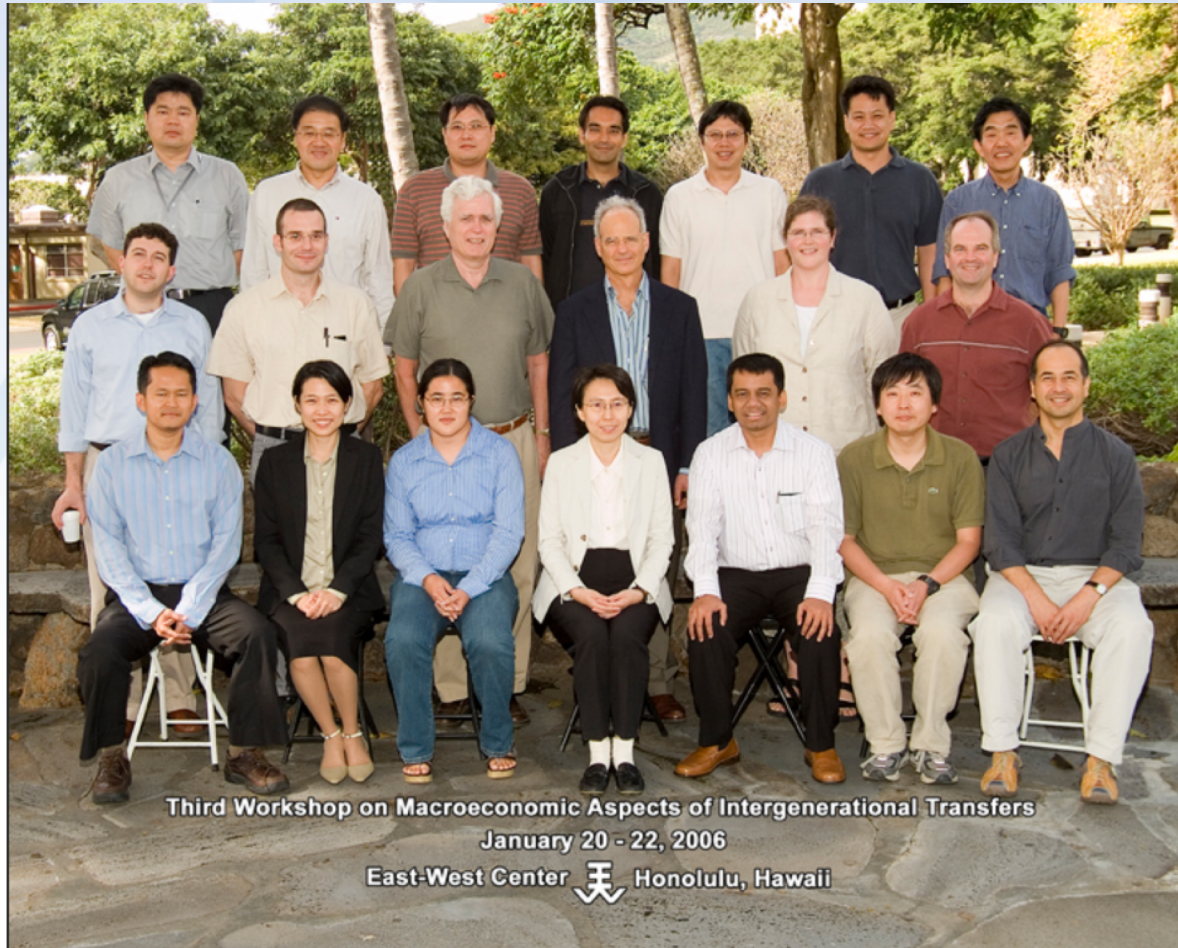
# Patrocinio

- **División de Población de Naciones Unidas (CELADE-CEPAL)**
- El Centro Internacional de Investigaciones para el Desarrollo (IDRC), Canada
- National Institute of Ageing (NIH)
- Center for the Economics and Demography of Ageing (CEDA), Berkeley
- East-West Center, Hawaii
- Fondo de Población de las Naciones Unidas (UNFPA)
- Bill and Melinda Gates Foundation
- Asian Development Bank
- Japan: MEXT.ACADEMIC FRONTIER
- MacArthur Foundation
- Unión Europea
- Financiamiento interno de gobiernos y otras instituciones dentro de cada país

# Conferencias Globales

- I. Berkeley, Enero 2004
- II. Berkeley, Enero 2005
- III. Honolulu, Enero 2006
- IV. Berkeley, Enero 2007
- V. Seoul, Korea, Enero 2007
- VI. Berkeley, Enero 2009
- VII. Honolulu, Junio 2010
- VIII. Belo Horizonte / Rio, Brazil, Diciembre 2011
- IX. Barcelona, Junio 2013
- X. Beijing, China, Noviembre 2014
- XI. Dakar, Senegal, Julio 2016
- XII. Ciudad de México, Julio 2018

# Honolulu, USA 2006



Third Workshop on Macroeconomic Aspects of Intergenerational Transfers

January 20 - 22, 2006

East-West Center  Honolulu, Hawaii

# Beijing, China 2014





# Publicaciones

- Artículos de investigación



# Publicaciones

- Artículos de investigación
- Resúmenes de política
- Otras publicaciones



NTA Coordinators:  
Ronald D. Lee and Andrew Mason  
Series Editor: Sidney H. Wessley  
NTA Multinational Advisory Committee:  
Aleksa Farkasova Prokavcova,  
Ronald D. Lee, Kang-Il Lee,  
Thomas Lindh, Andrew Mason,  
Tom Miller, Germano Mwaka,  
Nashid Ojima, and Madsyris Nygaard  
The lead institutions for the NTA project are the Center for the Economics and Demography of Aging, University of California at Berkeley and the Population and Health Studies Program, East West Center. Regional centers are based at Nihon University Population Research Institute in Tokyo, the United Nations Economic Commission for Latin America and the Caribbean in Santiago, the African Economic Research Consortium in Nairobi, and the Institute for Future Studies in Stockholm.  
Support has been provided by the US National Institute on Aging, the John D. and Catherine T. MacArthur Foundation, the International Development Research Center (IDRC), the United Nations Population Fund (UNFPA), the European Science Foundation, and a grant to Nihon University Population Research Institute from the Academic Frontier Project for Private Universities.  
National Transfer Accounts  
Population and Health Studies  
East West Center  
1015 East West Road  
Honolulu, Hawaii 96848-3001  
Telephone: +1 808 944 2766  
Fax: +1 808 944 2760  
Email: [contact@ntaaccounts.org](mailto:contact@ntaaccounts.org)  
Website: [www.ntaaccounts.org](http://www.ntaaccounts.org)

## National Transfer Accounts: A new way to look at population change and economic growth

In all modern societies, there are extended periods of dependency at the beginning and the end of life—children and the elderly consume more resources than they produce through their own labor, while working-age adults produce more than they consume. What makes this economic lifecycle possible is the flow of resources over time and across generations through a complex of social, economic, and political institutions. This cultural pattern raises a number of important questions for economic planners and policymakers.

Who in the population earns income from labor, and how much do they earn? How much do people at every age consume? And how do young and old people, who consume more than they produce, support themselves—do they rely on their families, on taxpayers through government programs, or in the case of the elderly, on their own savings and investments?

Because of this economic lifecycle, changes in population age structure pose special challenges for policymakers. Are public pension and healthcare programs sustainable? Will tax payers be able—and willing—to provide financial support for growing numbers of old people? Will the expansion of elderly populations slow economic growth? And what are the likely impacts of population aging on social and economic inequality? The National Transfer Accounts (NTA) network is bringing together data and developing analytical tools to help answer these important questions.

Researchers and policymakers use measures such as the Gross Domestic Product (GDP) and other components of the System of National Accounts to assess the performance of national economies. By providing estimates of income and consumption by age, NTA adds an important dimension to measures of GDP and other widely used economic indicators.

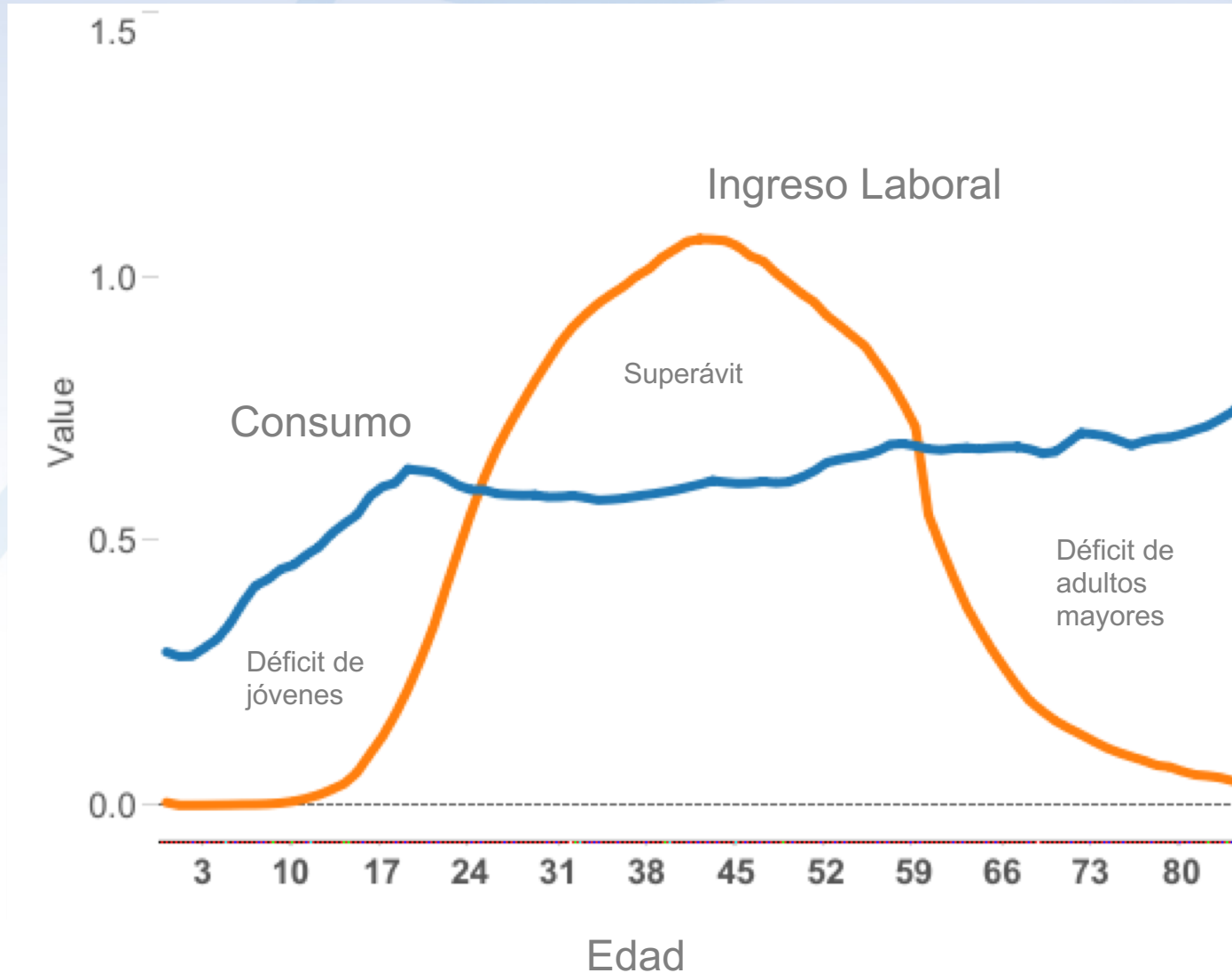
NTA also estimates economic flows across age groups, showing how each age group relies on sharing and saving to support consumption at all stages of life. All economic flows are considered, distinguished into two categories—transfers between age groups and the use of assets accumulated at one time of life to fund consumption at another. Transfers flow through government programs, such as education, healthcare, and pensions, and through families. Asset-based flows can involve governments, but they occur primarily through private institutions such as businesses, financial firms, and markets.

The NTA approach, which looks at economic indicators through the lens of age, is particularly critical today because the age structures of populations are changing more quickly than in the past. In roughly half the countries of the world—concentrated in Africa, Latin America, and South Asia—the working-



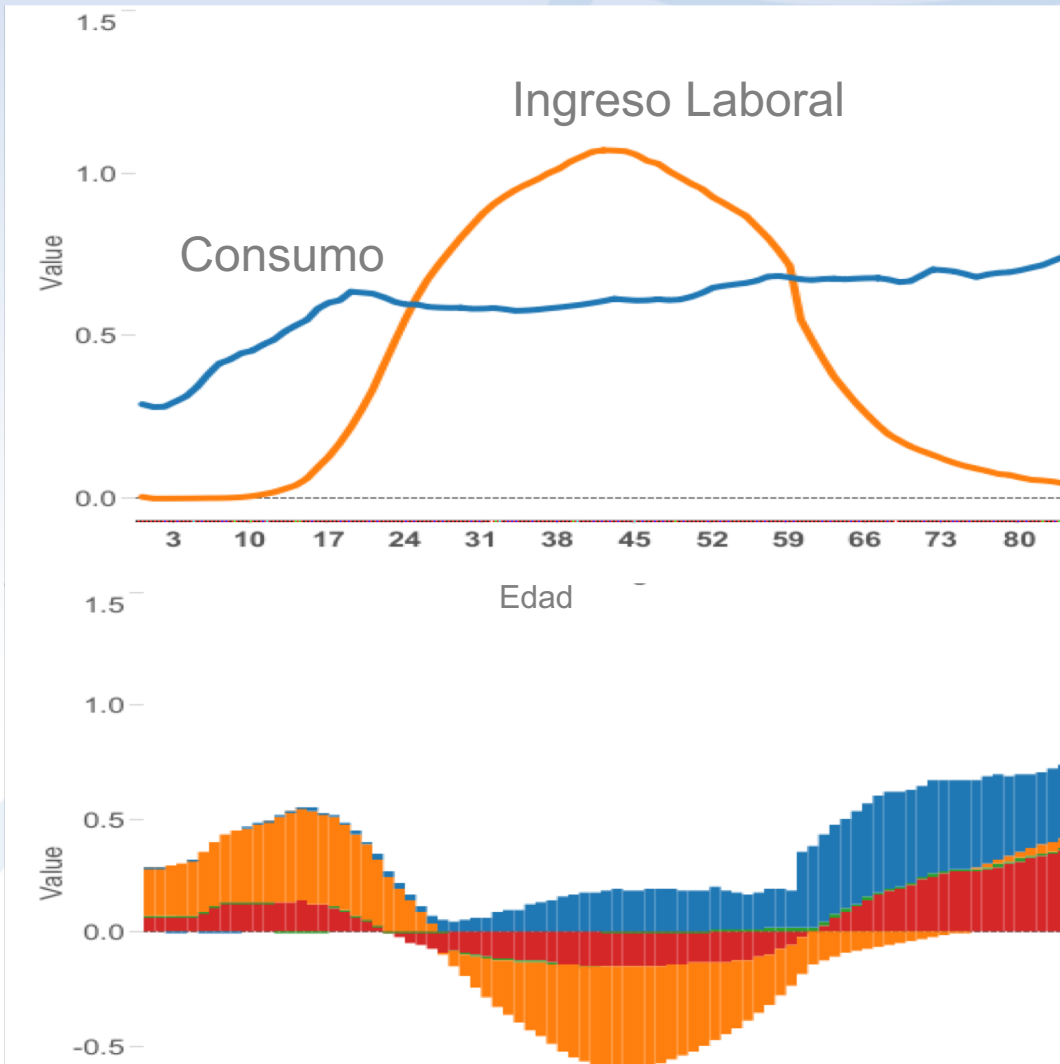
# Ciclo de Vida Económico

Global, 2006



# Ciclo de Vida Económico

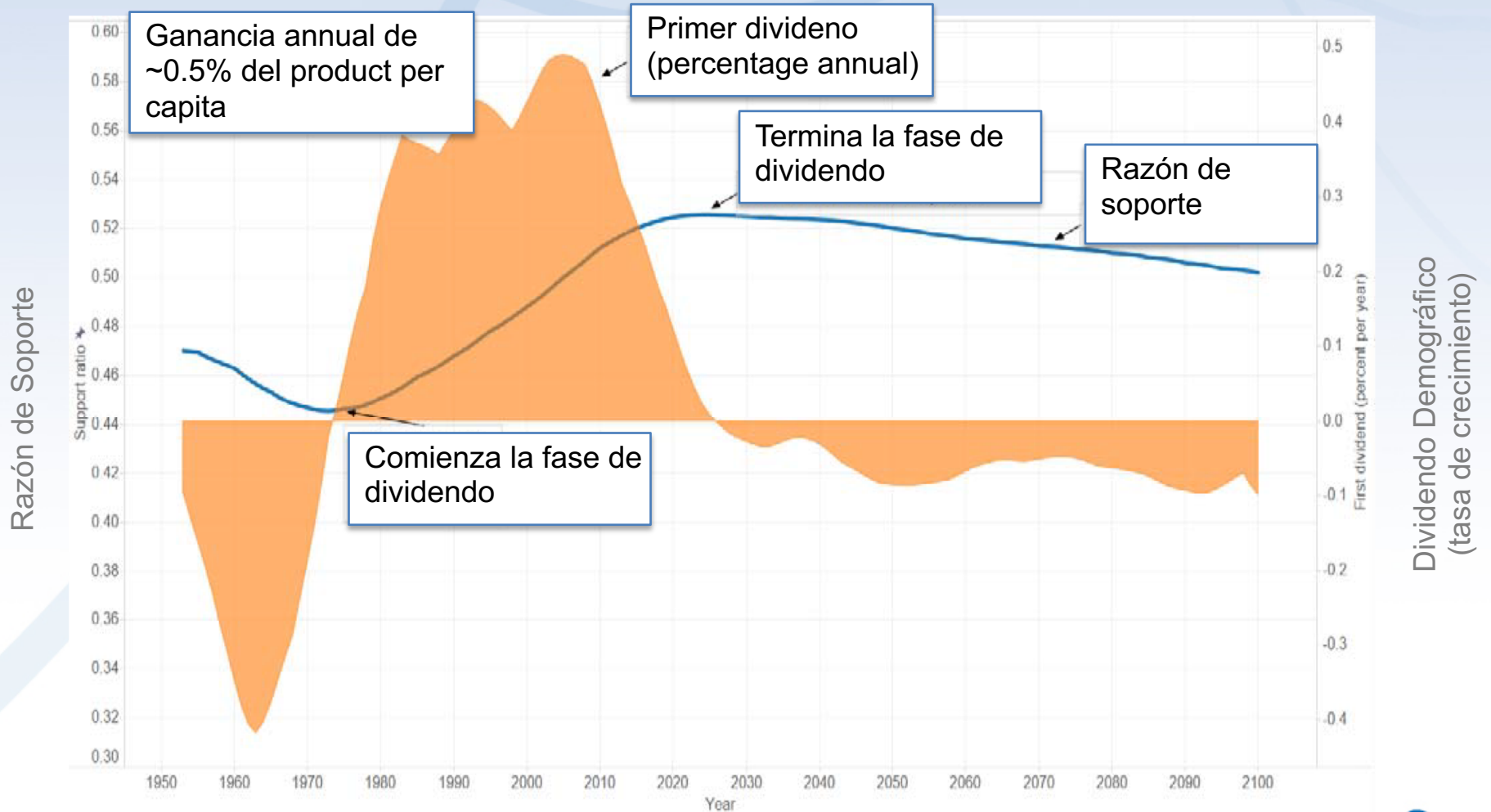
Global, 2006



## Fuentes de Financiamiento de Déficit

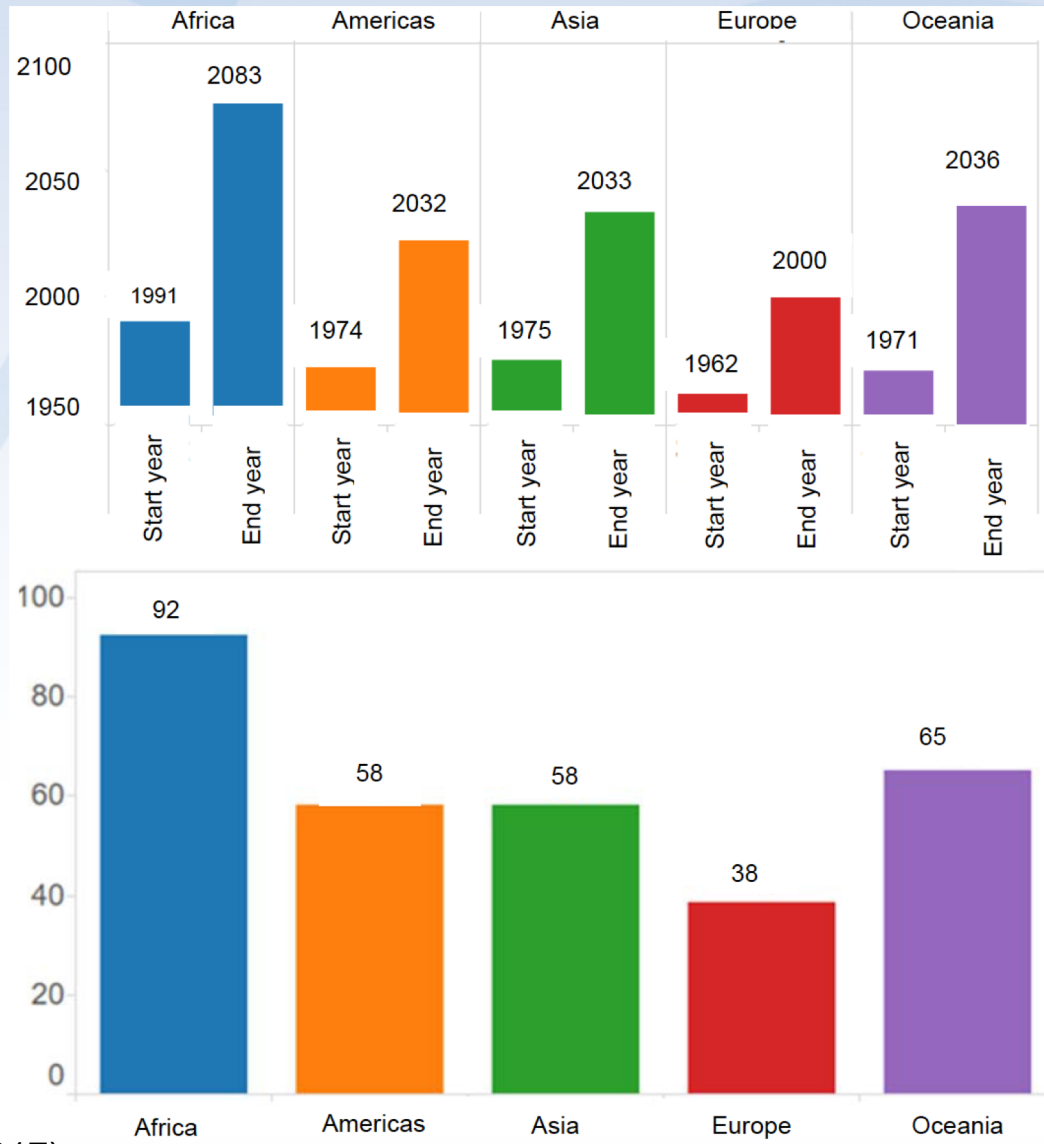
- Reasignaciones de activos privados
- Transferencias privadas
- Reasignaciones de activos públicos
- Transferencias públicas

# Dividendo Demográfico



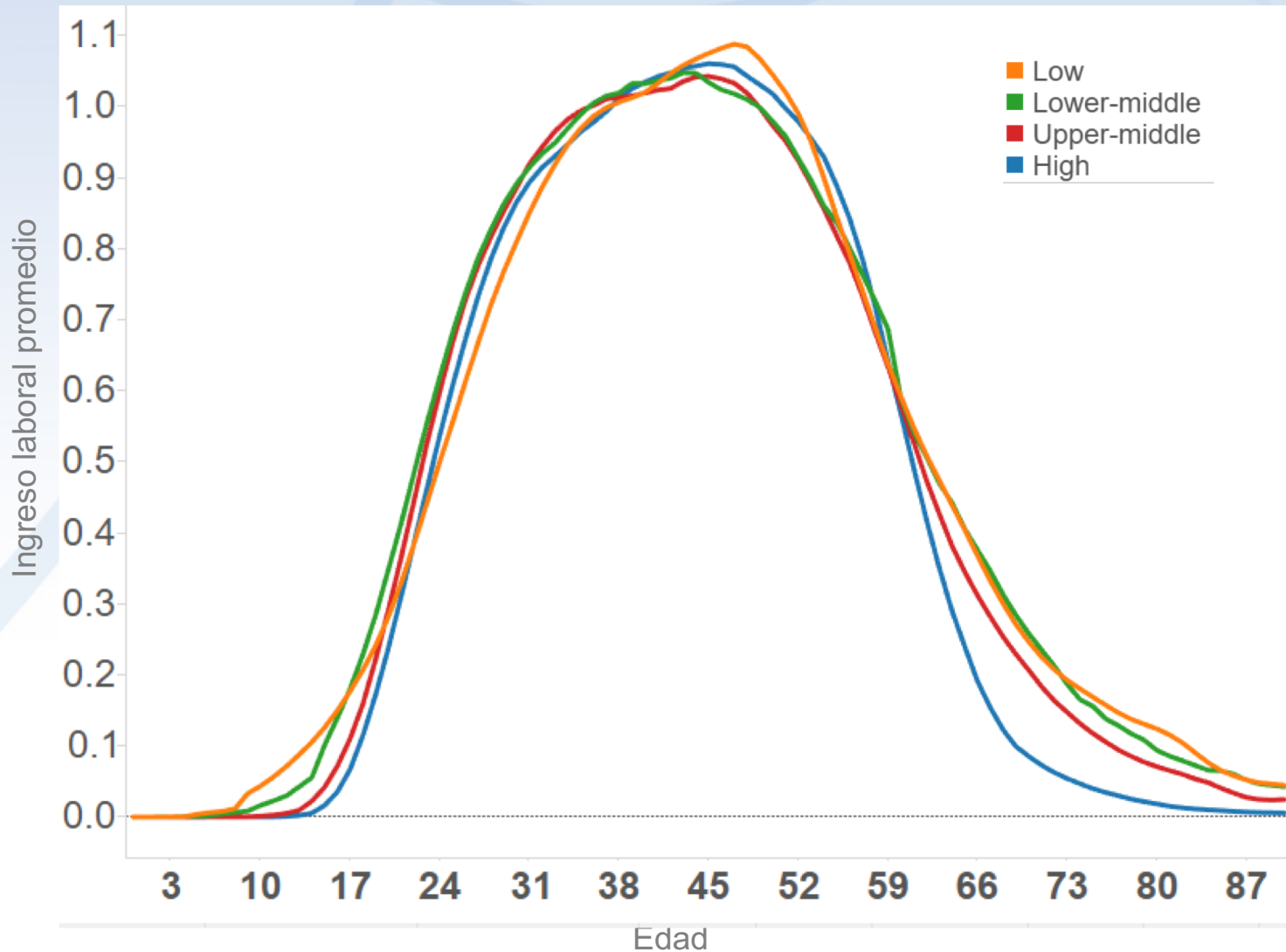
Fuente: Mason et al. (2017)

# Periodo de Dividendo por Región

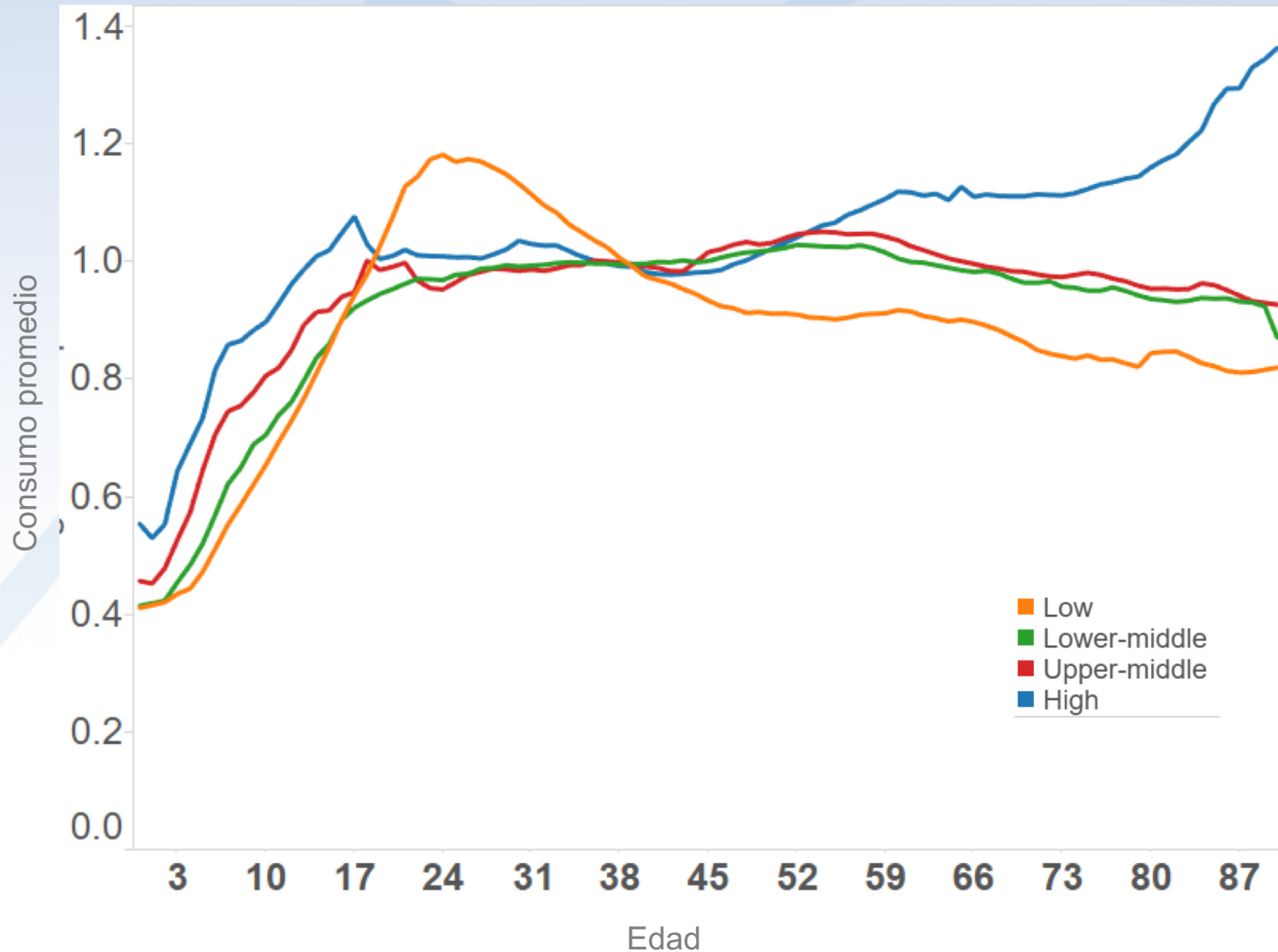


Fuente: Mason et al. (2017)

# Ingreso laboral promedio por edad

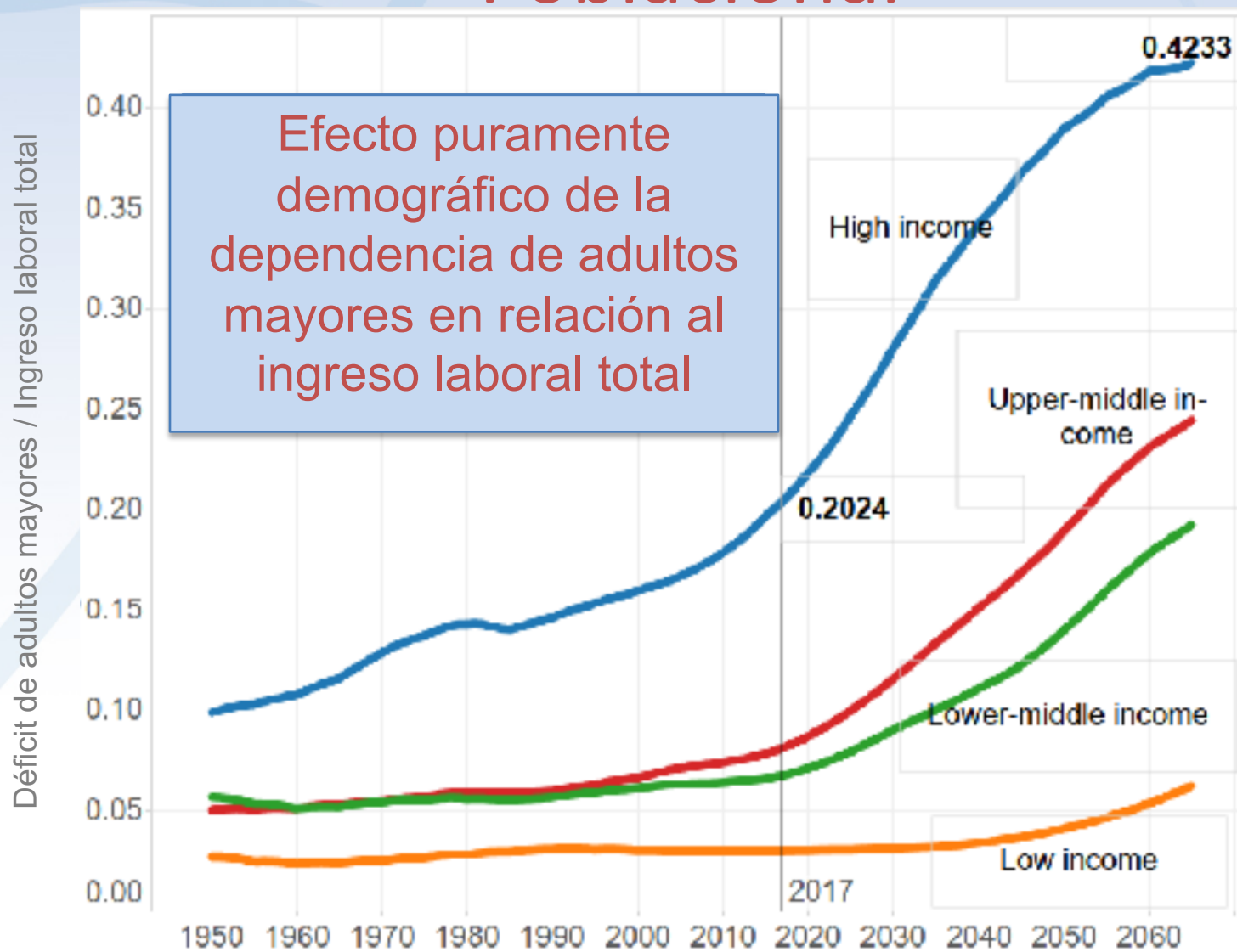


# Ingreso laboral promedio por edad

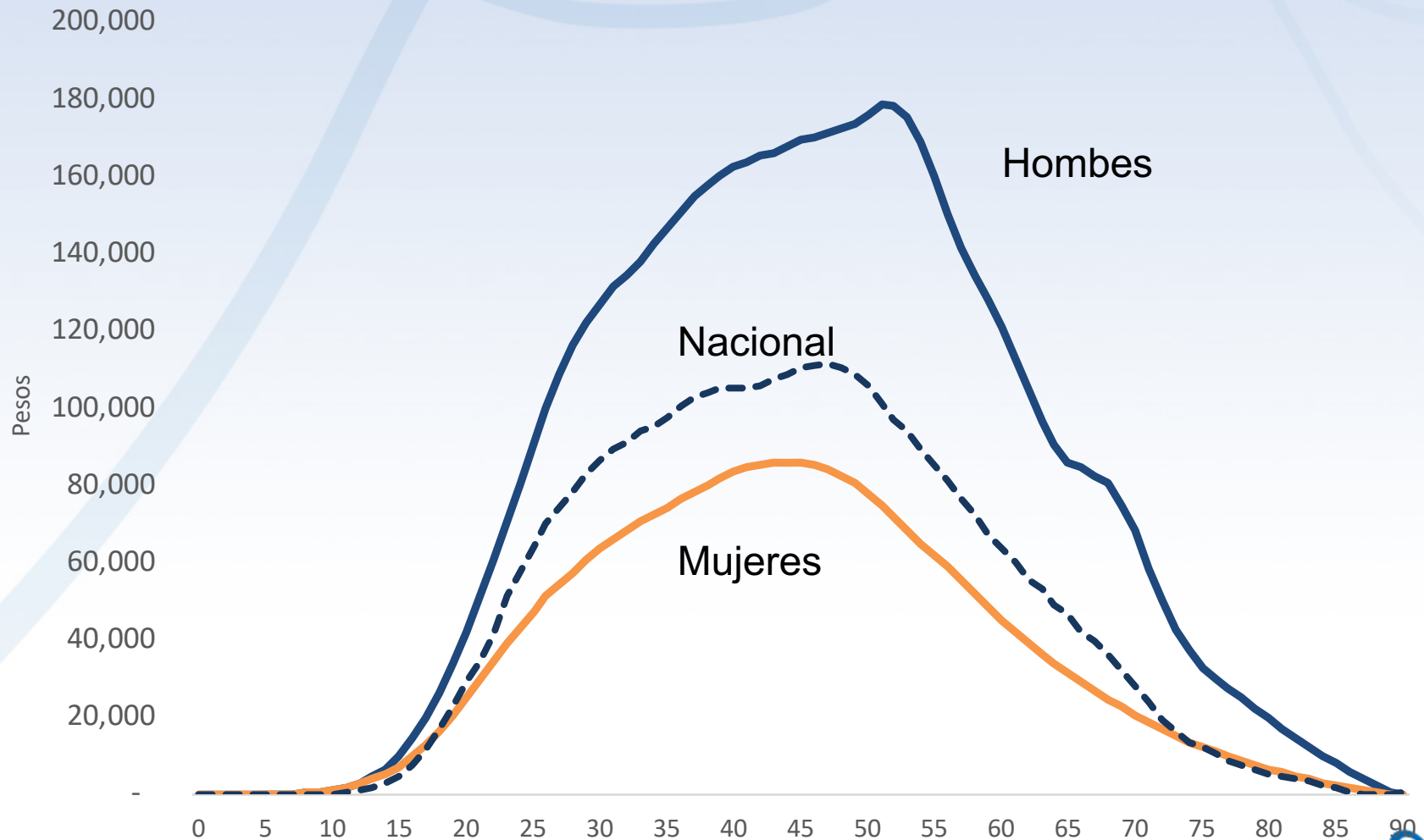




# Carga Financiera del Envejecimiento Poblacional



# Ingreso Laboral por Edad y Sexo



# Cuentas Nacionales de Transferencias de Tiempo

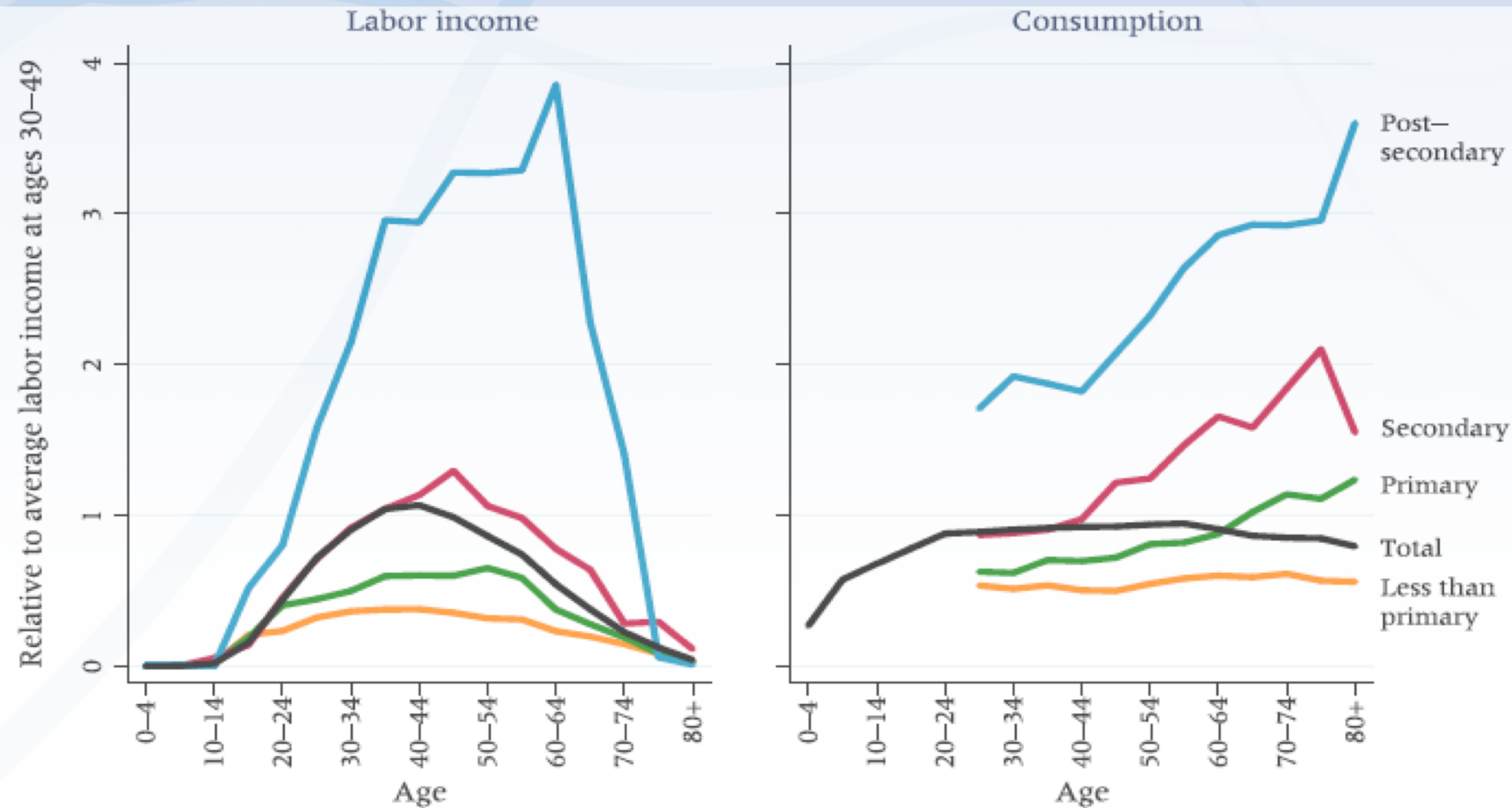


**COUNTING  
WOMEN'S  
WORK**

[www.countingwomenswork.org](http://www.countingwomenswork.org)

- Medición del tiempo dedicado a actividades productivas no remuneradas por edad y sexo
- Evaluación económica de esas actividades
- Potencial para incrementar el dividendo demográfico
- Incremento en la participación laboral femenina y la productividad
- Ganancias en eficiencia
- Efectos en el envejecimiento

# Ciclo de Vida Económico por Nivel Educativo



SOURCE: Authors' calculations.

Source: Rentería et al., 2016.

# Sitio Web de NTA

## www.ntaccounts.org



### National Transfer Accounts: Understanding the Generational Economy

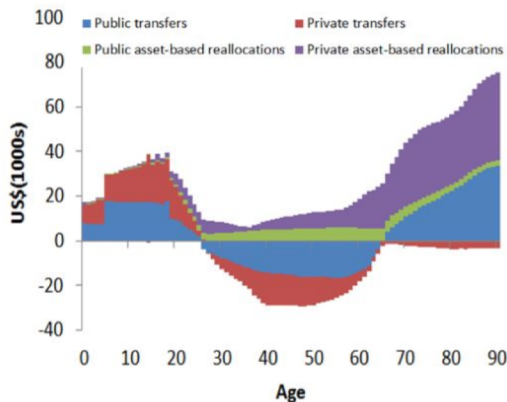
The goal of the National Transfer Accounts (NTA) project is to improve understanding of how population growth and changing population age structure influence economic growth. Research teams in more than 60 countries are constructing accounts that measure how people at each age produce, consume, and share resources, and save for the future. Other important economic and demographic indicators.

The NTA project is shedding light on many areas of importance to policymakers:

- Public policy on pensions, health care, education, and reproductive health
- Social institutions, such as the extended family
- The full economic contribution of women
- Social, political, and economic implications of population aging

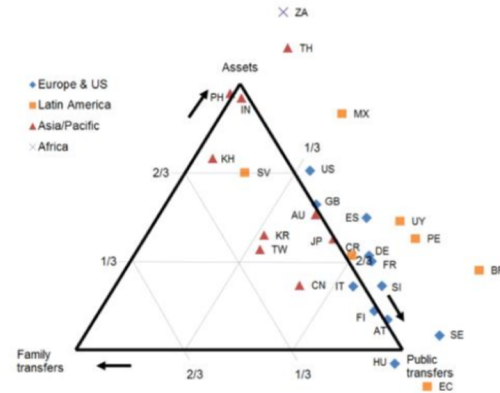
### DATA

Age reallocations, per capita, United States, 2011



### RESEARCH

Old-age Support System, Selected Countries.



GO TO: [DATABASE](#), [INDICATORS](#), [APPLICATIONS](#)

GO TO: [PUBLICATIONS](#), [SPECIAL PROJECTS](#)

- [Home](#)
- DATA**
  - [Database: Download data](#)
  - [Indicators](#)
  - [Applications](#)
- RESEARCH**
  - [Publications](#)
  - [Special projects](#)
- TRAINING**
  - [Methods](#)
  - [Workshops](#)
  - [NTA Course](#)
- COLLABORATION**
  - [Conferences](#)
  - [Members](#)
  - [Governance](#)
- REGIONAL CENTERS**
  - [NTA Asia site](#)
  - [NTA Europe site](#)
  - [NTA LAC site](#)
- EXTERNAL LINKS**
  - [CEDA](#)
  - [East-West Center](#)
  - [Counting Women's Work](#)
  - [AGENTA](#)



# Reflexiones Finales

- La transición demográfica trae consigo oportunidades, pero también retos importantes.
- Las implicaciones del cambio demográfico pueden abarcar varios sectores: distribución de recursos, crecimiento económico, equidad generacional, equidad de género y por nivel socioeconómico, sustentabilidad fiscal y de los sistemas de pensiones.
- La metodología de NTA es una herramienta útil para medir estos efectos y recomendar acciones de política basados en evidencia.